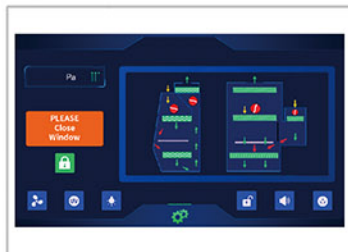




## Class III Biological Safety Cabinet



LCD Display



Front Window



Pass Box



Independent Negative  
Cycle Structure

## ADVANTAGE

- 7-inch touch color display screen: Touch operation, real-time, more clear and dynamic display of various values.
- Power-off memory, restore the state before power-off after power-on, and have visual prompts to alarm.
- Screen lock function: Touch the screen lock button lightly, and the operation interface is locked to prevent mis-operation and facilitate management.
- The three side walls of the working area adopt high-quality 304# stainless steel integrated structure, which is easy to clean.
- The work surface is made of high-quality 304# stainless steel, which is designed in a basin shape and is easy to clean.
- Convenient front window design, the front window glass can be opened and closed freely, which is convenient for putting in large equipment and cleaning operations.
- The work surface can be easily lifted or taken out, which is convenient for cleaning and disinfection operations.
- The magnetic opening and closing design of the transmission window, the interlocking device of the transmission window, and the independent negative pressure cycle structure protect the safety of the operator.
- The cabinet body and the top of the transfer window are equipped with a pre-filter to effectively prolong the service life of the main filter.
- The whole machine is equipped with four ULPA ultra-high efficiency filters.
- The design of butyl rubber gloves has good corrosion resistance, and the replacement of gloves is simple and convenient.

## TECHNICAL PARAMETERS

Model	BSC-1500III-X-H
External Size	1920*950*2180mm
Internal Size	1170*640*600mm
Pass Box Size	580*440*560mm
Gloves	One pair of 800mm butyl rubber gloves
Front Window	12mm tempered glass, anti-ultraviolet radiation
Display	Touch LCD display
Pre-filter	Polyester fiber, washable
Pressure	Negative, $\geq 120\text{Pa}$
ULPA Filter	Operating area supply air filter: 99.9995% (0.12 $\mu\text{m}$ in diameter) Base cabinet exhaust filter: 99.9995% (0.12 $\mu\text{m}$ in diameter) Top exhaust filter: 99.9995% (0.12 $\mu\text{m}$ in diameter) Pass box supply air filter: 99.9995% (0.12 $\mu\text{m}$ in diameter)
Noise	$\leq 67\text{dB}$
Alarm	Audio and visual alarm, abnormal pressure
Work Zone Material	304 stainless steel
Illumination	$\geq 1000\text{lux}$
Consumption	1300W
LED Lamp	14W*2
UV Lamp	30W*2, 8W*1 Emission of 253.7nm for most efficient decontamination
Power Supply	Standard: AC 220V 50/60Hz, optional: AC 110V 50/60Hz
Packing Size	2060*1100*2350mm
Gross Weight	480kg